

2H13

HALF THE COPPER - FULL EFFECT

BIOLOGICAL ADDITIVE TO IMPROVE THE EFFECTIVENESS OF COPPER, SULPHUR AND OTHER SINGLE SITE INHIBITOR FUNGICIDES

WHAT IS 2H13?

2H13 is a new additive, authorized recently in Germany (BVL and FIBL) and Austria.

The WG formulation contains cells of the yeast strain *Meyerozyma guilliermondii* 2H13.

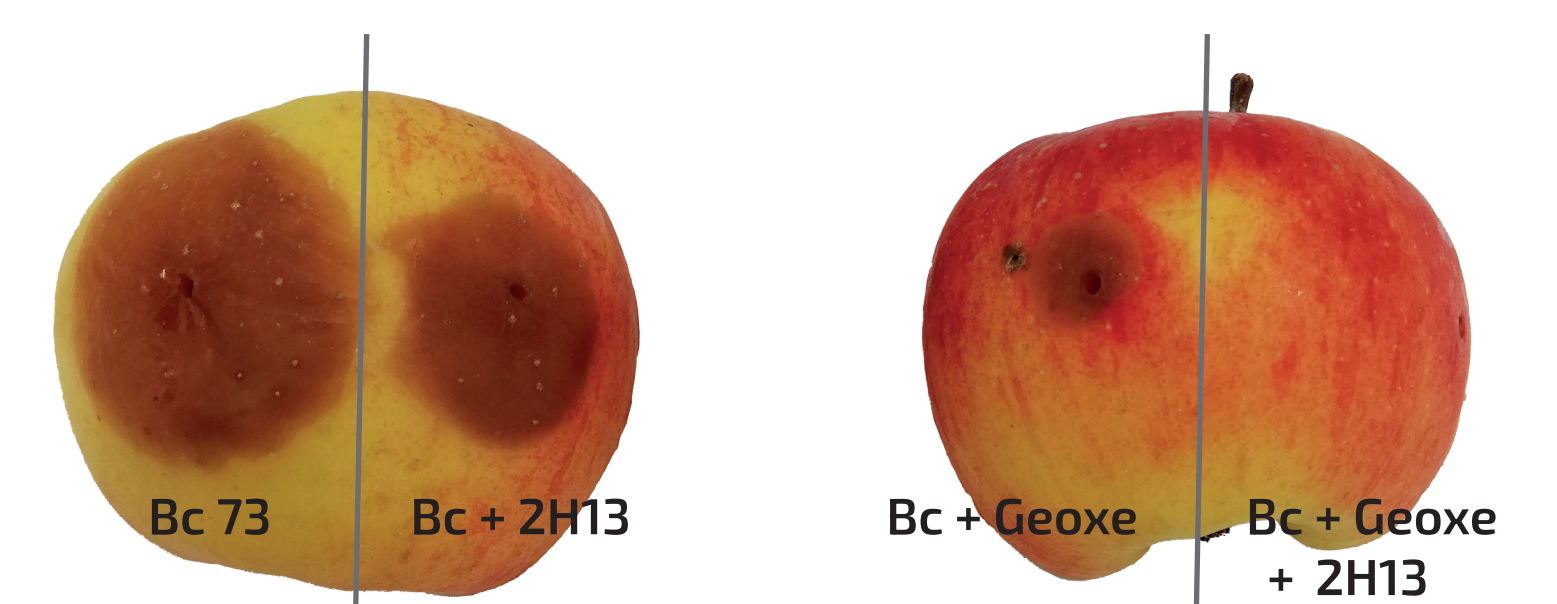
2H13 comes in 1 kg units and is produced by the e-nema GmbH in Schwentental, Germany.



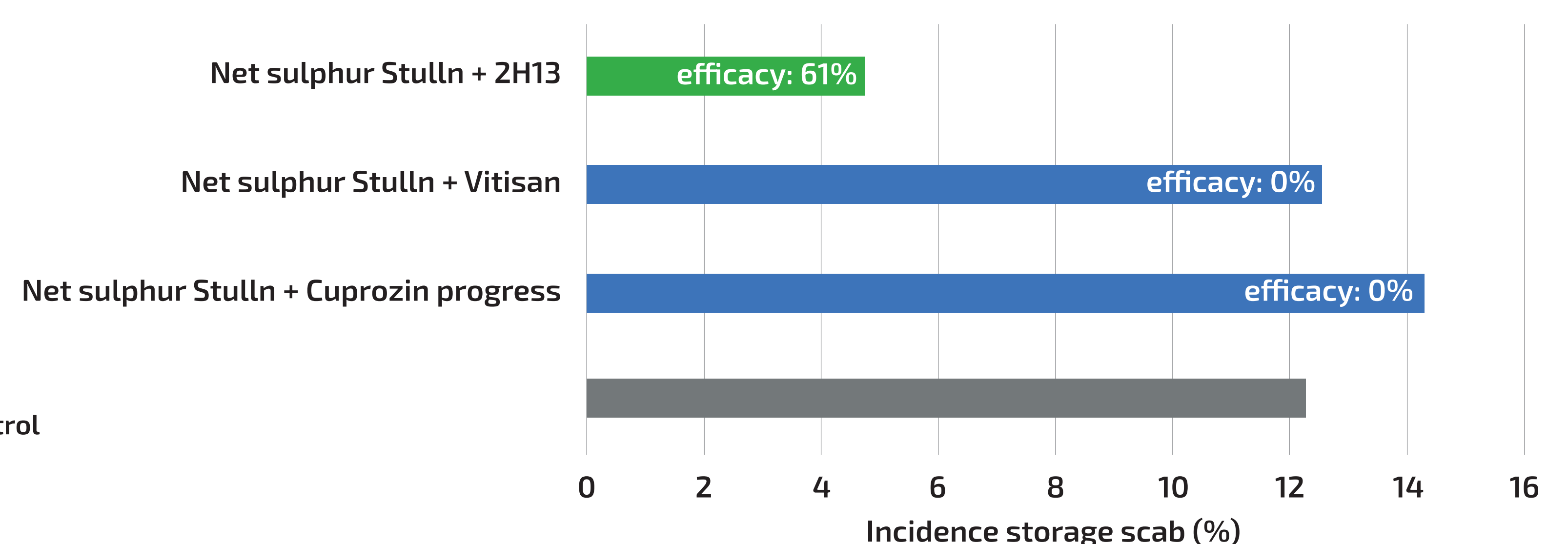
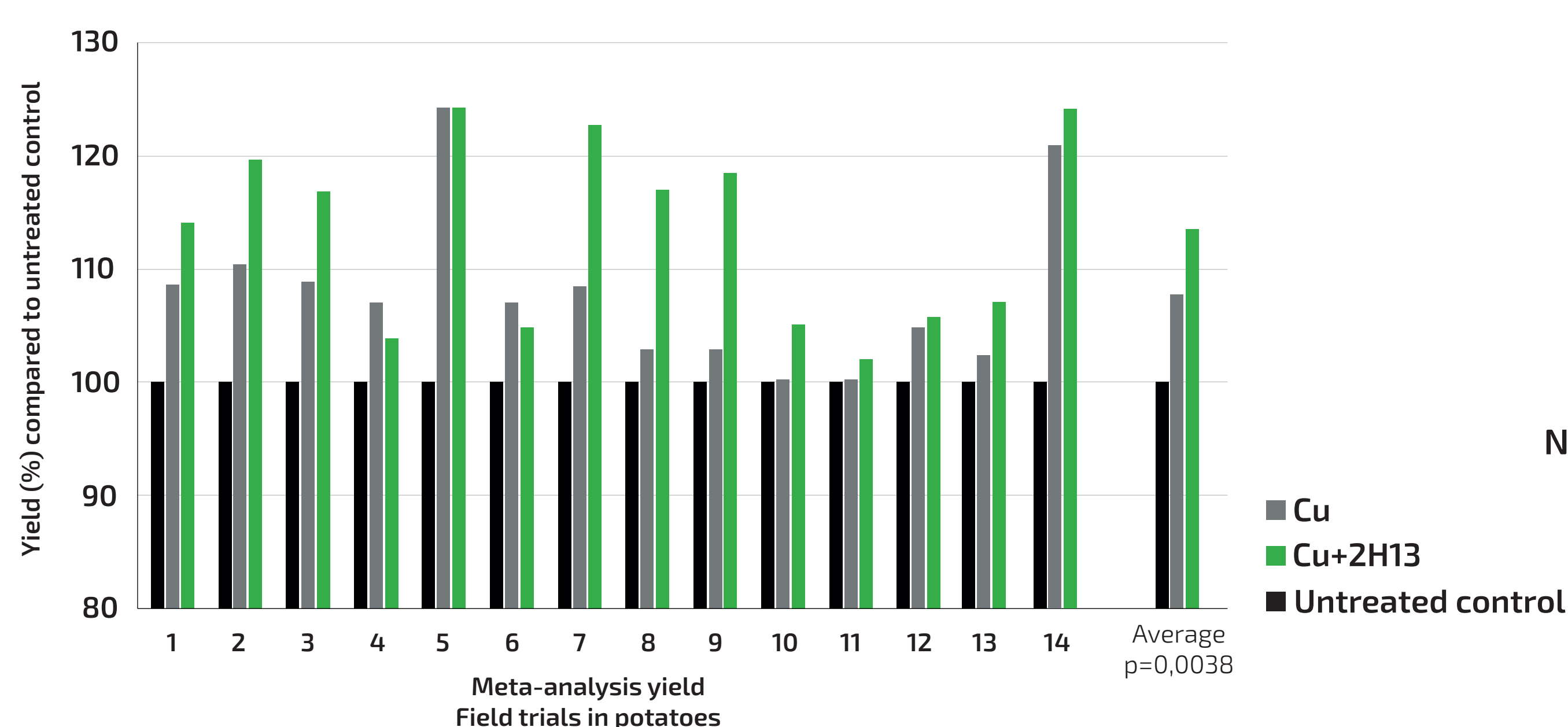
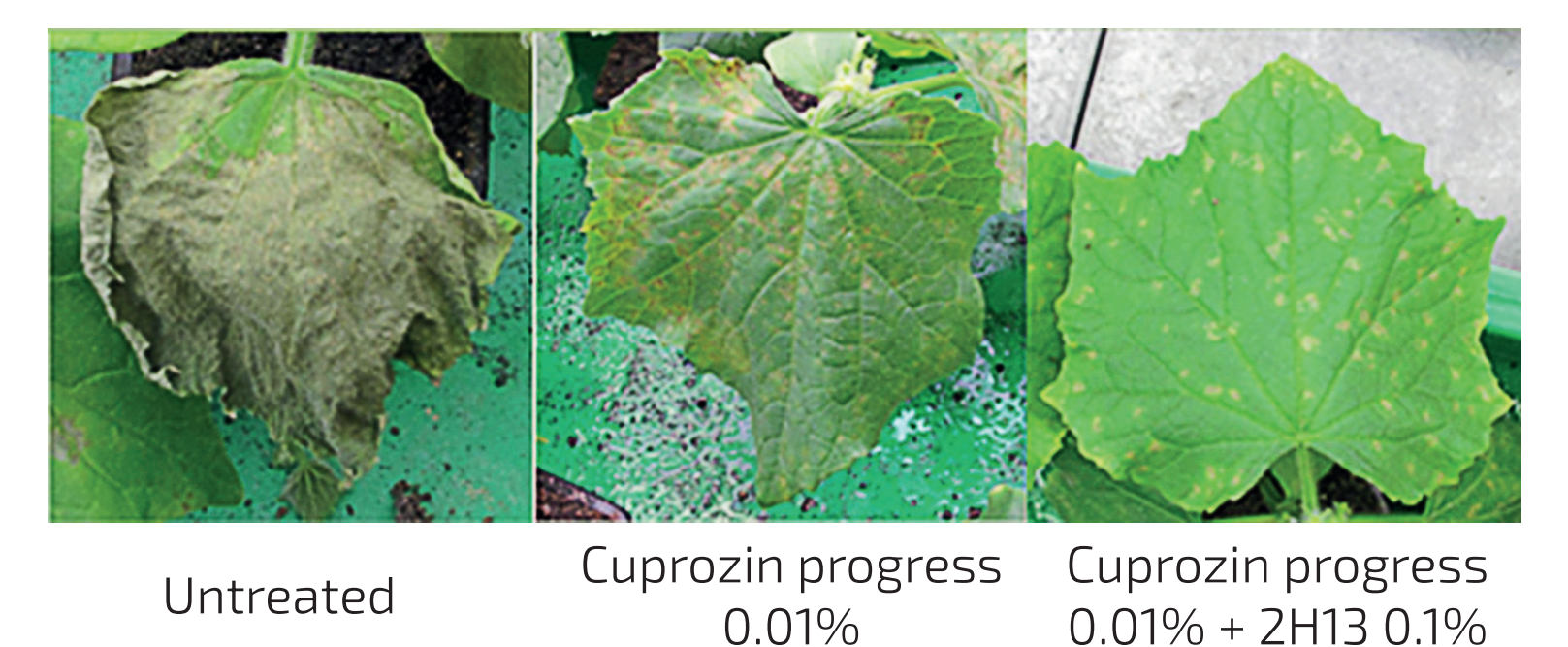
ADVANTAGES OF 2H13

- Improves the **effectiveness of copper up to 50%** when used against oomycetes (late blight on potatoes, downy mildew of grapevines and cucumber)
- The **efficiency of sulphur** against many storage diseases is increased by the addition of 2H13
- 2H13 improves the distribution of active ingredients on the plant surface and increases their biological efficacy.
- Higher yields: Various field trials show an average of **6-7% higher yields when treating potatoes**.
- Resistance delay: 2H13 slows down the development of resistance to fungicides - particularly effective against botrytis in strawberries.

Application against botrytis in apples after 6 days



Application against downy mildew in cucumber



WANT TO LEARN MORE?

VISIT THE E-NEMA BOOTH
HALL 4.1 STAND NO.: 162

WWW.E-NEMA.DE/2H13

