

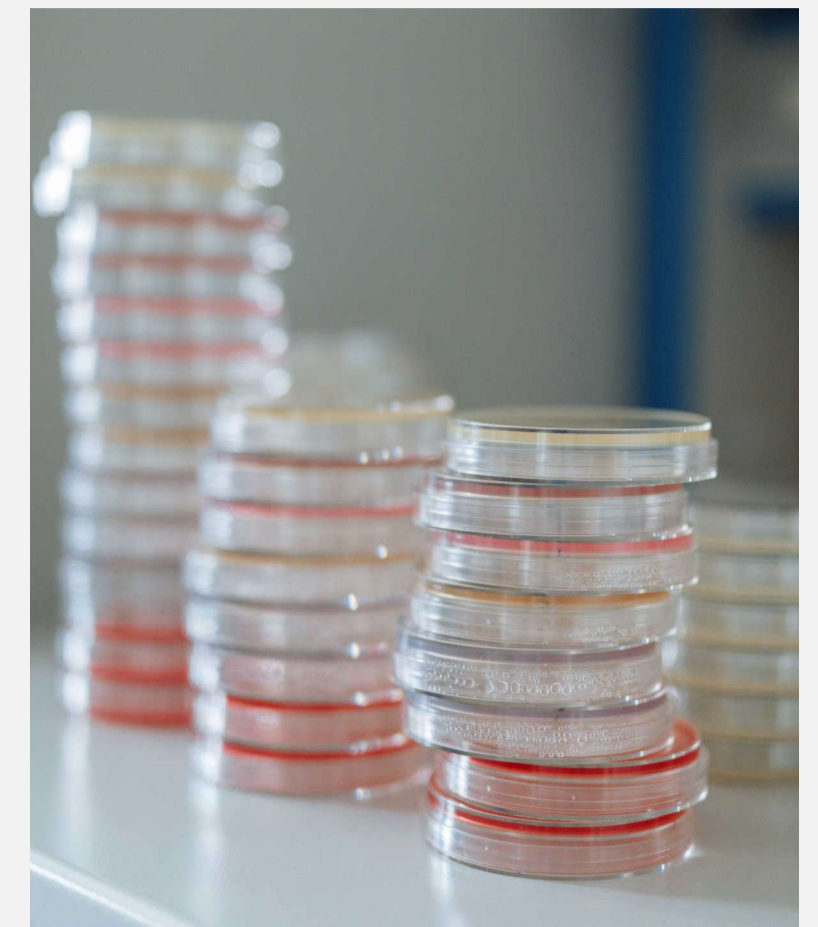
# StrainInSight: a unique private strain collection for novel strain discovery



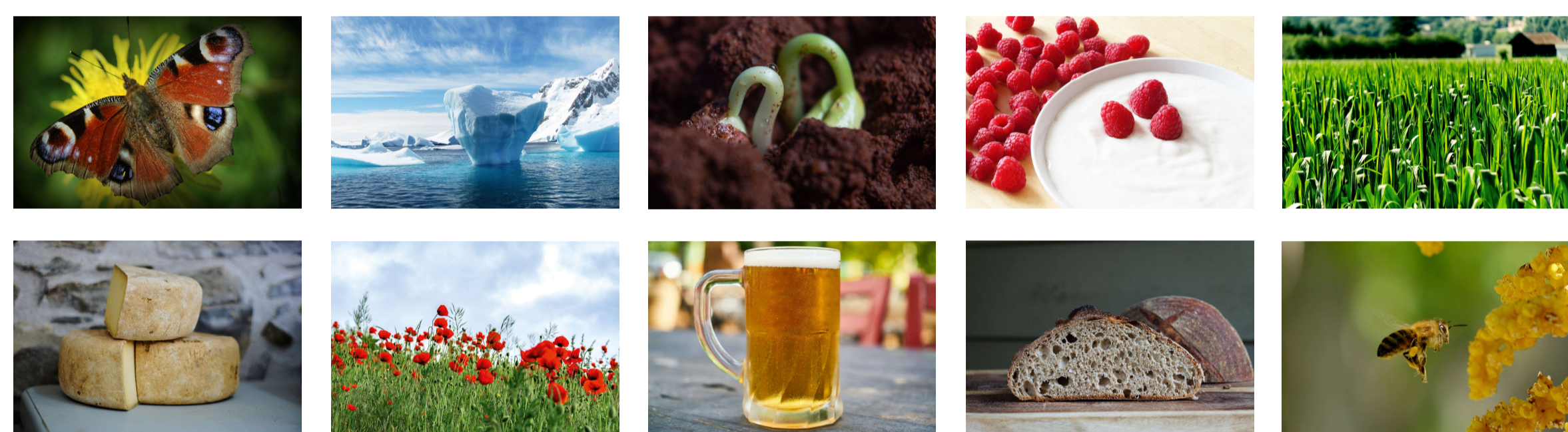
## OUR COLLECTION

The StrainInSight® private strain collection contains >45,000 bacteria that originate from LM-UGent research projects studying bacterial diversity and ecology in a wide variety of environments. Our strains were identified using state-of-the-art methods available at the time of isolation and extensive efforts using modern methods are ongoing (i.e. MALDI-TOF MS and whole-genome sequencing) to further refine strain identifications.

- ▶ Looking for new bacteria to innovate your research and product development? Explore the StrainInSight® private strain collection, tools and services!



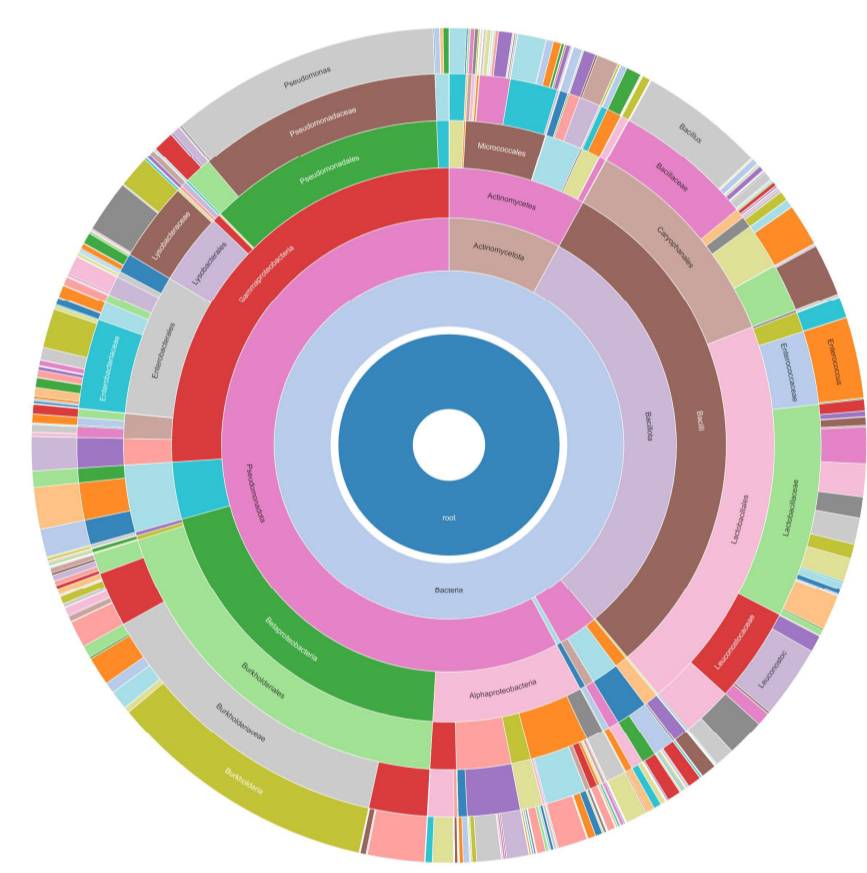
## INTERACTIVE DASHBOARD



Our dashboard provides a user-friendly interface to explore our strain collection. Filter on strain metadata such as isolation source.

Strain	Identification	Risk group	Priority	Isolation source	Country	Year	Id method	Gene sequences	Genomes	MSI platform
4604	1.2.1.181.2 1.2.1.181.2	Unknown	LI	Leuconostocaceae	Plant - Flesher	Belgium	2021	MALDI-TOF MS, WGS, 151 151.0kba	yes	yes
4605	1.2.1.181.2 1.2.1.181.2	Unknown	LI	Leuconostocaceae	Plant - Flesher	Belgium	2021	MALDI-TOF MS, WGS, 151 151.0kba	yes	yes
4606	1.2.1.181.2 1.2.1.181.2	Unknown	LI	Leuconostocaceae	Plant - Flesher	Belgium	2021	MALDI-TOF MS, WGS, 151 151.0kba	yes	yes
4607	1.2.1.181.2 1.2.1.181.2	Unknown	LI	Leuconostocaceae	Plant - Flesher	Belgium	2021	MALDI-TOF MS, WGS, 151 151.0kba	yes	yes
4608	1.2.1.181.2 1.2.1.181.2	Unknown	LI	Leuconostocaceae	Plant - Flesher	Belgium	2021	MALDI-TOF MS, WGS, 151 151.0kba	yes	yes
4609	1.2.1.181.2 1.2.1.181.2	Unknown	LI	Enterobacteriaceae	Plant - Flesher	Belgium	2021	MALDI-TOF MS, WGS, 151 151.0kba	yes	yes
4610	1.2.1.181.2 1.2.1.181.2	Unknown	LI	Leuconostocaceae	Plant - Flesher	Belgium	2021	MALDI-TOF MS, WGS, 151 151.0kba	yes	yes
4611	1.2.1.181.2 1.2.1.181.2	Unknown	LI	Streptococcaceae	Plant - Flesher	Belgium	2021	MALDI-TOF MS, WGS, 151 151.0kba	yes	yes
4612	1.2.1.181.2 1.2.1.181.2	Unknown	LI	Leuconostocaceae	Plant - Flesher	Belgium	2021	MALDI-TOF MS, WGS, 151 151.0kba	yes	yes
4613	1.2.1.181.2 1.2.1.181.2	Unknown	LI	Streptococcaceae	Plant - Flesher	Belgium	2021	MALDI-TOF MS, WGS, 151 151.0kba	yes	yes
4614	1.2.1.181.2 1.2.1.181.2	Unknown	LI	Leuconostocaceae	Plant - Flesher	Belgium	2021	MALDI-TOF MS, WGS, 151 151.0kba	yes	yes
4615	1.2.1.181.2 1.2.1.181.2	Unknown	LI	Leuconostocaceae	Plant - Flesher	Belgium	2021	MALDI-TOF MS, WGS, 151 151.0kba	yes	yes
4616	1.2.1.181.2 1.2.1.181.2	Unknown	LI	Streptococcaceae	Plant - Flesher	Belgium	2021	MALDI-TOF MS, WGS, 151 151.0kba	yes	yes
4617	1.2.1.181.2 1.2.1.181.2	Unknown	LI	Leuconostocaceae	Plant - Flesher	Belgium	2021	MALDI-TOF MS, WGS, 151 151.0kba	yes	yes
4618	1.2.1.181.2 1.2.1.181.2	Unknown	LI	Acetivibronaceae	Plant - Flesher	Belgium	2021	MALDI-TOF MS, WGS, 151 151.0kba	yes	yes
4619	1.2.1.181.2 1.2.1.181.2	Unknown	LI	Acetivibronaceae	Plant - Flesher	Belgium	2021	MALDI-TOF MS, WGS, 151 151.0kba	yes	yes

Filter strains based on isolation source or geographical origin.



Identification and taxonomy.

## EXTENSIVE GENOME DATABASE

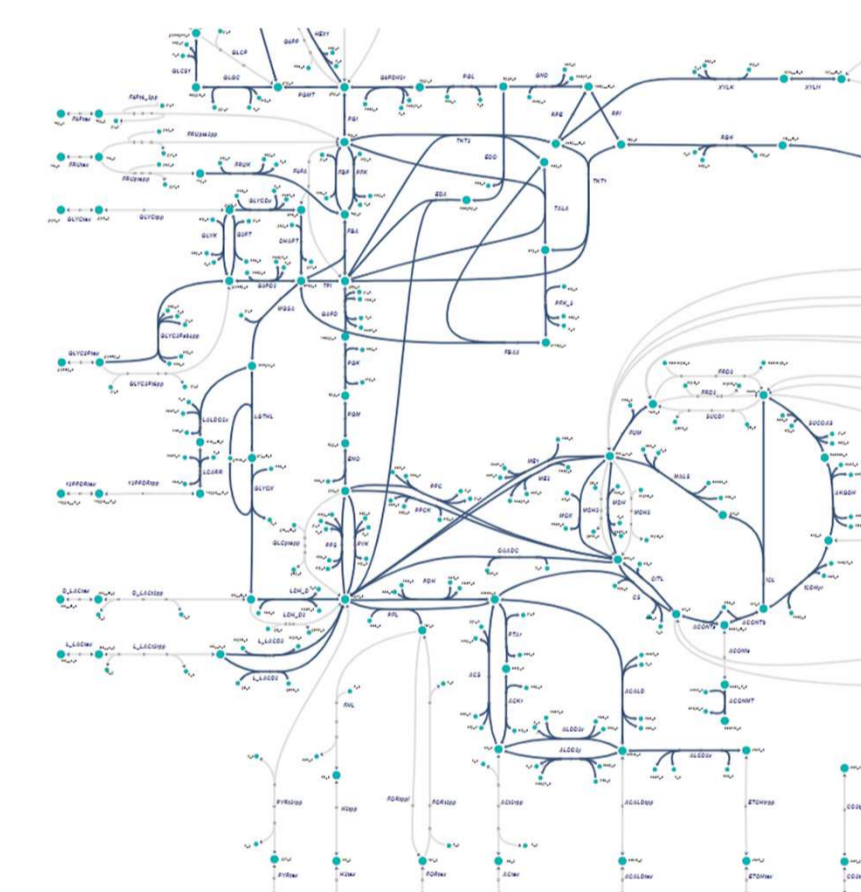


Search options

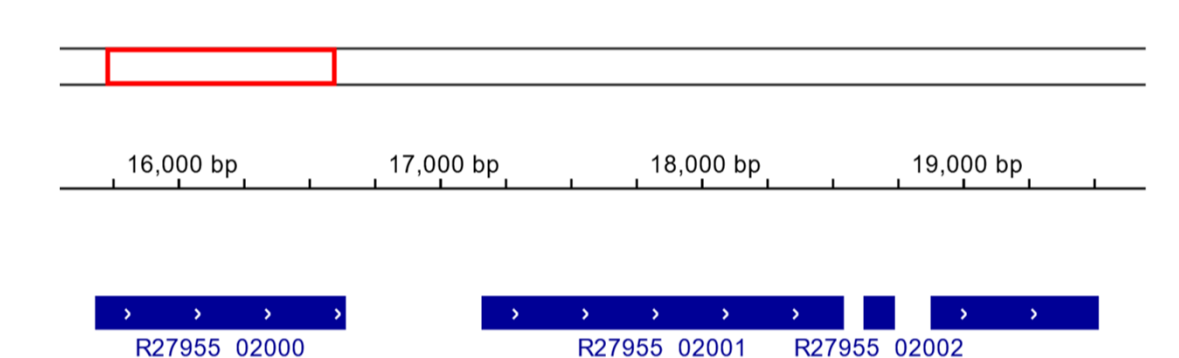
- ✓ Metadata
- ✓ Gene name
- ✓ EC number
- ✓ Nucleotide BLAST
- ✓ Protein BLAST
- ✓ Metabolite name



Our interactive online genome database provides various search options to query >1000 bacterial genomes and to filter on isolate metadata.



Pathway visualization based on genome annotation.

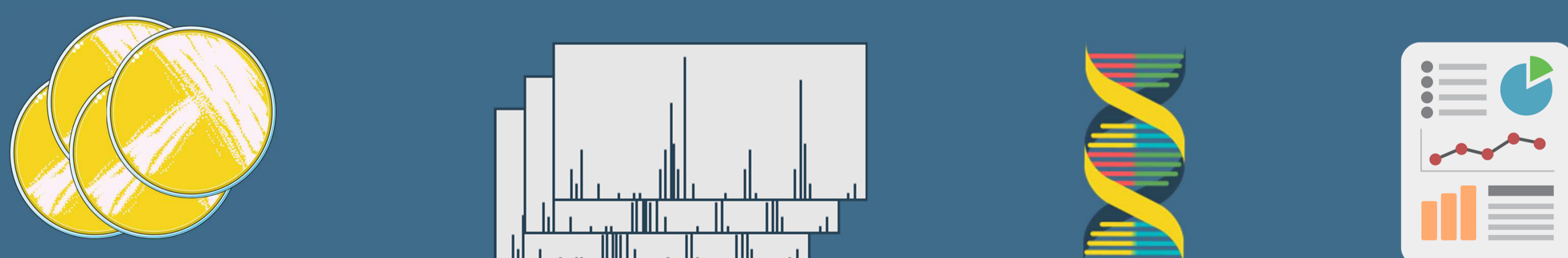


Identifier: R27955\_02000  
Name: ldh  
Description: Belongs to the LDH MDH superfamily, LDH family  
EC number: 1.1.1.27

Interactive genome browser for visual exploration.

## OUR SERVICES

- Bacterial cultivation and preservation
- Bacterial isolation, identification and dereplication via MALDI-TOF MS
- Whole-genome sequence analyses and bioinformatics
- Taxonomy and novel species descriptions
- Custom strain searches and bacterial genome analyses



## LEARN MORE

The StrainInSight® private strain collection, tools and services are available for academia and industry. Visit our website or contact us for more information.



✉ [straininsight@ugent.be](mailto:straininsight@ugent.be)

🌐 <https://straininsight.ugent.be>

Peeters C.<sup>1</sup>, Depoorter E.<sup>1</sup>, Wieme A.<sup>1,2</sup>, Cleenwerck I.<sup>1,2</sup>, Hellemans A.<sup>1,2</sup>, Vandamme P.<sup>1,2</sup>

1. Laboratory of Microbiology - Ghent University, Belgium
2. BCCM/LMG Bacteria Collection - Ghent University, Belgium

Supported by the Flemish Supercomputer Center (VSC).